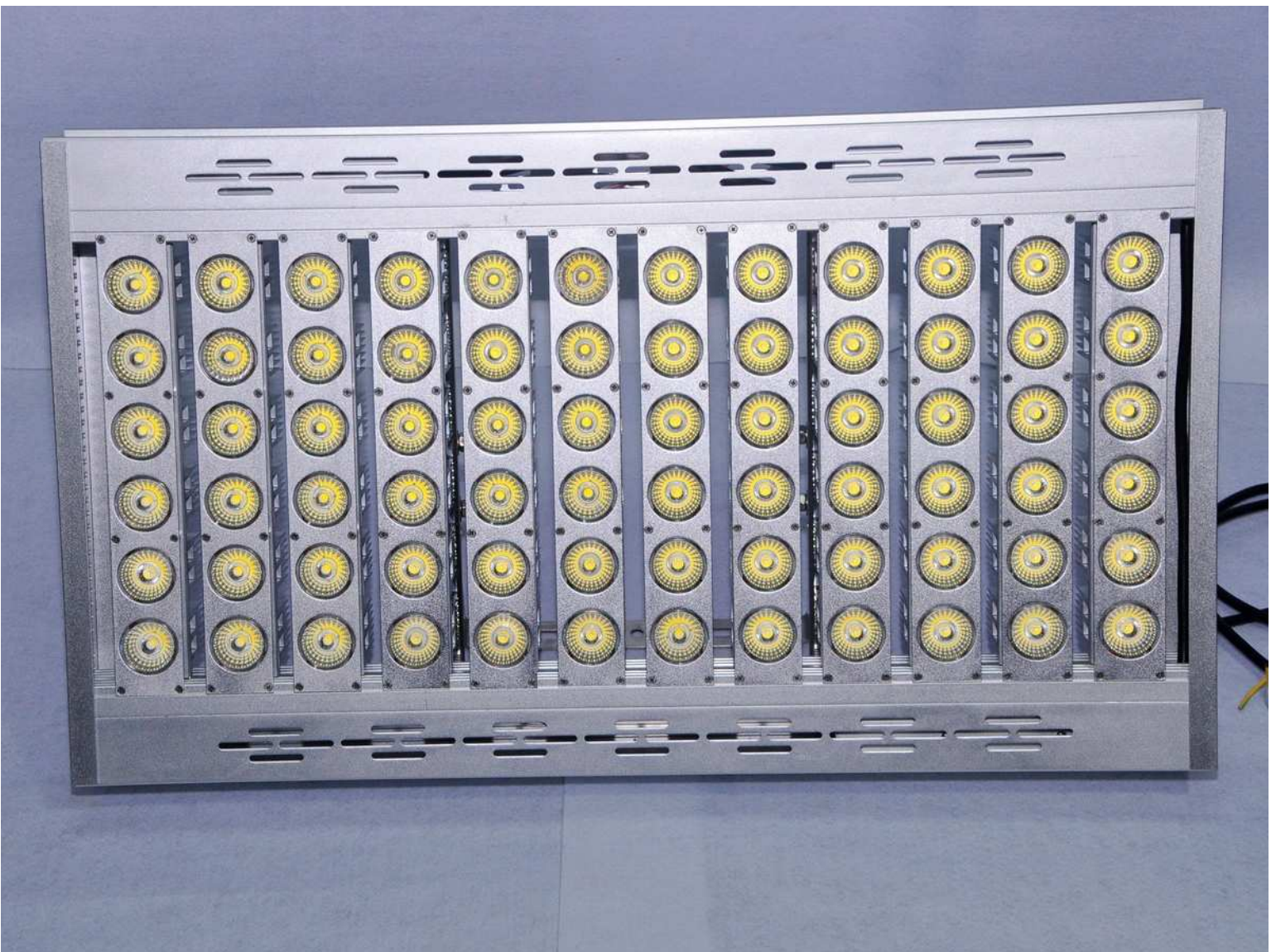


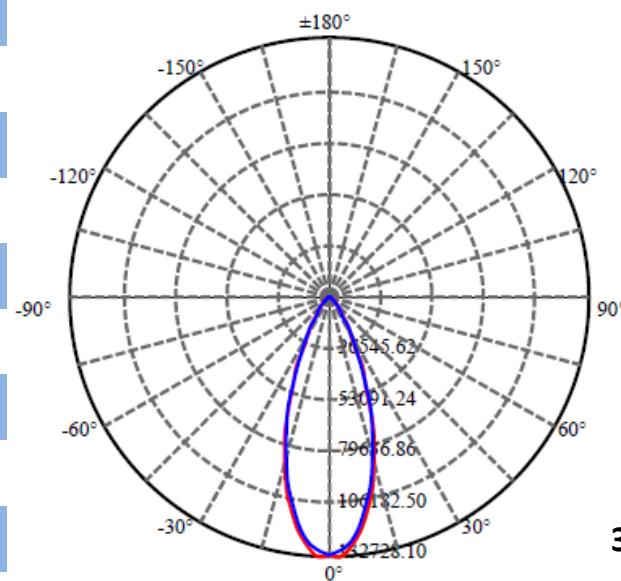
600w-700w LED FLOOD LIGHT SPECIFICATION



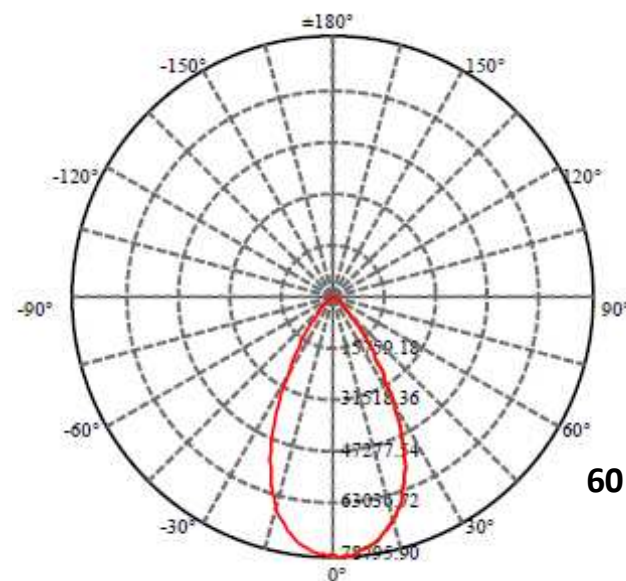
High power led flood light from 200w to 2000w outdoor lighting

specification

Model	GI- GL-FL600w/700w
Light Source	CREE
Driver	Mean Well
Input voltage	AC100-277V
Frequency	50-60Hz
Power factor(PF)	≥0.98
Luminous efficiency	100-130lm/watt
LED temperature	60°C±10%
Operating temperature	-30°C to 60°C
Storage temperature	-40°C to 85°C
Color Temperature	Warm White /White / Cold white.2800K-9000K
Color rendering index	Ra>85
Lighting Angle	10/ 24 / 38 / 60 / 90 /120degree
IP Rating	IP67
Economical lifetime	> 80,000 Hrs
Lamp Body Size(mm)	830*500*120
Net Weight (kg)	28
Packing Size (mm)	870*520*300
Gross Weight (kg)	37



38degree lens



60 degree lens

High power led flood light

from 200w to 2000w outdoor lighting

600w LED Flood Light

High power LED Flood light from
200w to 2000w

Professional stadium lighting and
outdoor lighting

High quality **CREE** chips flood
light.

Aluminum alloy body with
PMMA lens and **Mean Well**
Driver

Applications:

This product can be applied to all kinds of sports
venues, Courtyard, square, airports, large
construction sites, Shopping malls, office building,
exhibition hall, project planning, Farms, golf courses
playgrounds car parks, toll station , Gas station ware
house streets and tunnels, Racetrack ports industrial
billboards , garage lighting .

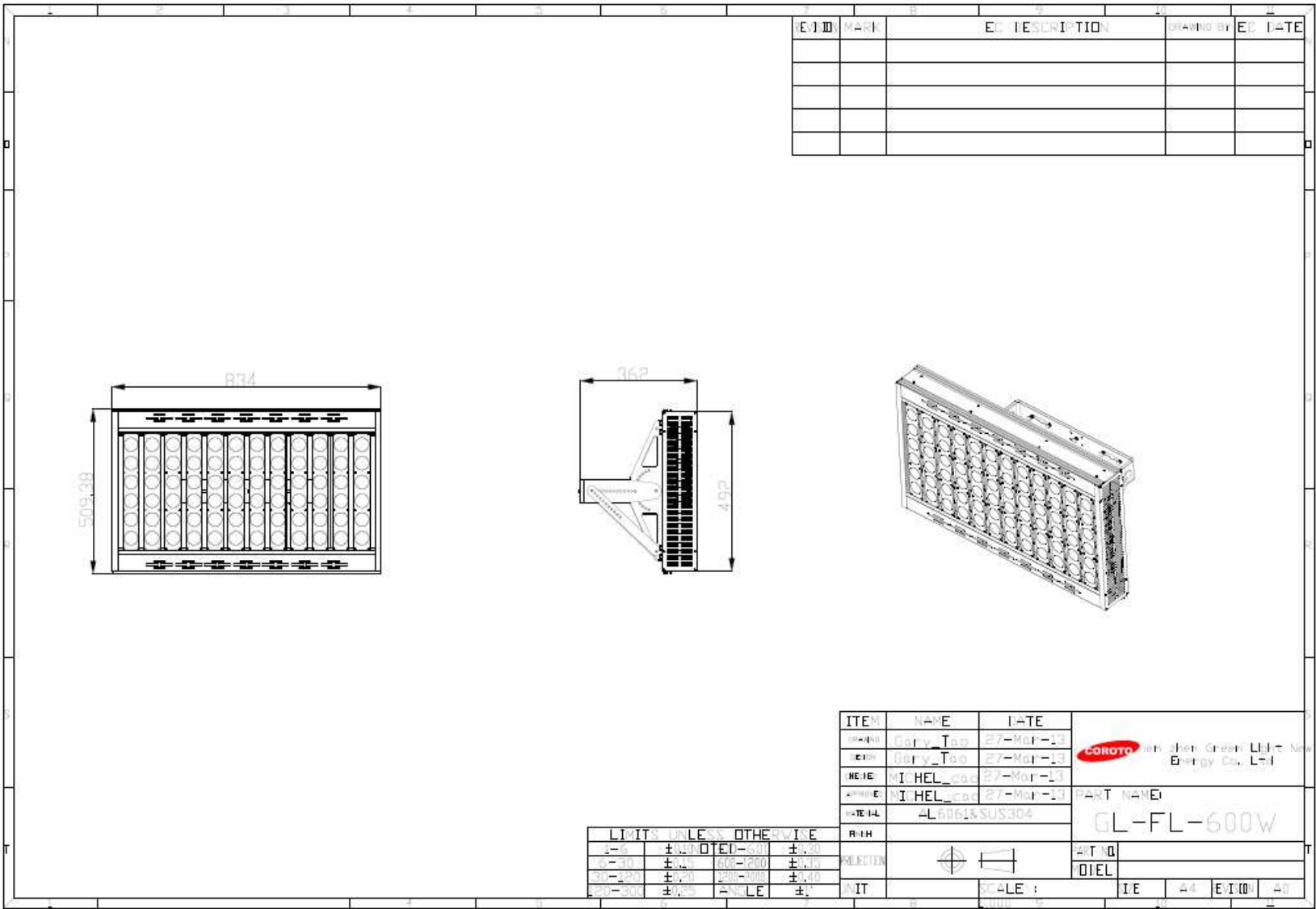


High power led flood light

from 200w to 2000w outdoor lighting

installation

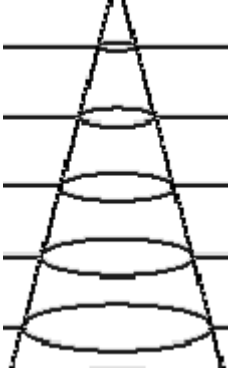
High power led flood light from 200w to 2000w outdoor lighting



600w beam angle 38°

H(m) S(m²)

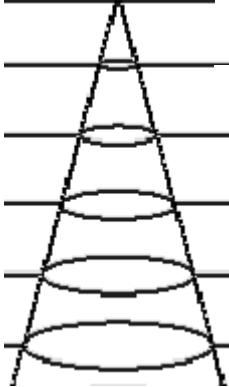
1	38.4	1322.9lux
10	153	330.7lux
20	346	147.0lux
30	615	82.7lux
40	961	52.9lux



600w beam angle 60 °

H(m) S(m²)

1	85	779.4lux
10	342	194.8lux
20	754	86.6lux
30	1372	48.7lux
40	2138	31.2lux



High power led flood light from 200w to 2000w outdoor lighting